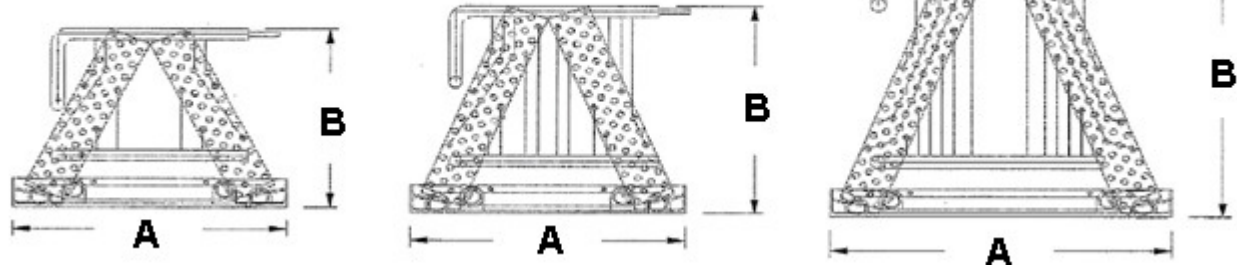


High Efficiency AC/Heat Pump Evaporator Coils
Cased Multiposition - Cased And Uncased Vertical
Dedicated Horizontal - Light Commercial

Uncased Chilled Water “A” Coils “CW” Series



Dimensions			
Model	Width – A	Height – B	Depth
CW018A8K0-41A	15-7/8"	10"	19"
CW024A8K1-41A	15-7/8"	12-1/2"	19"
CW036A8K2-41A	15-7/8"	14-1/2"	19"
CW048A8K5-15A	19-5/8"	20-3/8"	19"
CW060A6K5-15A	19-5/8"	20-3/8"	23-3/8"

All Technical Specifications Subject to Change Without Notice
For more information contact Customer Service at...
(817) 624-0820 or your Summit Representative

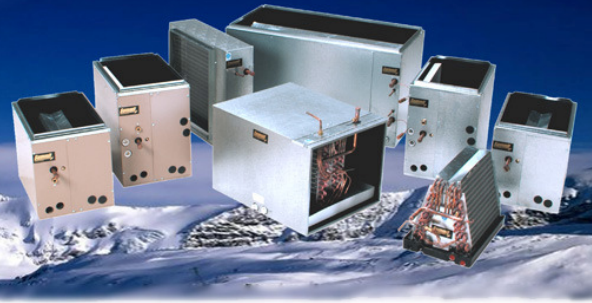
High Efficiency AC/Heat Pump Evaporator Coils
Cased Multiposition - Cased And Uncased Vertical
Dedicated Horizontal - Light Commercial

Uncased Chilled Water "A" Coils

Performance Data - Chilled Water A-Coils 8K0, 8K1, 8K2, 8K5, 6K5								
HEATING PERFORMANCE DATA:								
CHILLED WATER A-COIL MODEL	HOT WATER CAPACITIES @ 70°F ENTERING AIR TEMPERATURE ENTERING WATER TEMPERATURE				CFM	GPM	PRESS. DROP WATER (FT-WTR)	PRESS. DROP AIR (WC)
	100°F	105°F	110°F	115°F				
CW018A8K0-41A 10 x 16, 4 Row, 4 Circuits, 15 FPI	11,361	13,270	15,783	17,100	400	2.0	1.83	0.08
	12,090	14,114	16,139	18,166		4.0	6.50	
	12,292	14,346	16,402	18,459		6.0	12.85	
	14,929	17,448	19,975	22,507	600	2.0	1.83	0.15
	16,823	19,648	22,477	25,310		4.0	6.50	
	17,405	20,321	23,240	26,162		6.0	12.85	
	17,435	20,384	23,342	26,308	800	2.0	1.83	0.24
	20,701	24,186	27,678	31,177		4.0	6.50	
	21,804	25,464	29,129	32,800		6.0	12.85	
	CW024A8K1-41A 12 x 16, 4 Row, 4 Circuits, 15 FPI	11,661	13,618	15,577	17,540	400	2.0	2.20
12,303		14,360	16,419	18,478	4.0		7.83	
12,469		14,551	16,635	18,719	6.0		15.47	
15,493		18,102	20,717	23,338	600	2.0	2.20	0.11
17,307		20,209	23,114	26,023		4.0	7.83	
17,830		20,813	23,799	26,788		6.0	15.47	
18,194		21,263	24,341	27,426	800	2.0	2.20	0.18
21,471		25,079	28,694	32,314		4.0	7.83	
22,514		26,289	30,068	33,851		6.0	15.47	
CW036A8K2-41A 14 x 16, 4 Row, 8 Circuits, 15 FPI		22,050	25,764	29,485	33,215	800	5.0	1.96
	22,858	26,696	30,542	34,393	7.0		3.56	
	23,288	27,194	31,105	35,020	9.0		5.56	
	25,796	30,151	34,519	38,899	1000	5.0	1.96	0.20
	27,099	31,660	36,232	40,813		7.0	3.56	
	27,815	32,488	37,170	41,859		9.0	5.56	
	28,981	33,885	38,805	43,740	1200	5.0	1.96	0.27
	30,829	36,029	41,242	46,468		7.0	3.56	
	31,872	37,236	42,611	47,998		9.0	5.56	
	CW048A8K5-15A 20 x 16, 4 Row, 8 Circuits, 15 FPI	33,647	39,296	44,954	50,620	1200	8.0	6.50
34,355		40,115	45,883	51,657	10.0		9.65	
34,982		40,841	46,705	52,575	13.0		15.36	
37,717		44,058	50,411	56,775	1400	8.0	6.50	0.19
38,721		45,221	51,731	58,251		10.0	9.65	
39,623		46,265	52,914	59,572		13.0	15.36	
41,403		48,372	55,356	62,354	1600	8.0	6.50	0.24
42,732		49,913	57,107	64,314		10.0	9.65	
43,941		51,314	58,697	66,090		13.0	15.36	
44,748		52,288	59,845	67,419	1800	8.0	6.50	0.29
46,422	54,231	62,056	69,895	10.0		9.65		
47,964	56,019	64,087	72,167	13.0		15.36		
47,790	55,849	63,930	72,030	2000	8.0	6.50	0.34	
49,823	58,211	66,618	75,043		10.0	9.65		
51,718	60,410	69,118	77,841		13.0	15.36		
CW060A6K5-15A 20 x 20-3/8, 4 Row, 8 Circuits, 15 FPI	34,905	40,754	46,610	52,472	1200	8.0	7.26	0.10
	35,522	41,468	47,420	53,377		10.0	10.78	
	36,052	42,082	48,116	54,153		13.0	17.16	
	39,356	45,958	52,570	59,191	1400	8.0	7.26	0.13
	40,265	47,013	53,768	60,530		10.0	10.78	
	41,059	47,931	54,809	61,694		13.0	17.16	
	43,417	50,708	58,012	65,327	1600	8.0	7.26	0.16
	44,660	52,151	59,652	67,163		10.0	10.78	
	45,759	53,423	61,097	68,778		13.0	17.16	
	47,122	55,043	62,978	70,928	1800	8.0	7.26	0.19
48,730	56,910	65,104	73,308	10.0		10.78		
50,169	58,579	67,000	75,430	13.0		17.16		
50,505	59,001	67,515	76,046	2000	8.0	7.26	0.23	
52,501	61,321	70,156	79,006		10.0	10.78		
54,308	63,418	72,542	81,677		13.0	17.16		

All Technical Specifications Subject to Change Without Notice
For more information contact Customer Service at...
(817) 624-0820 or your Summit Representative

High Efficiency AC/Heat Pump Evaporator Coils
Cased Multiposition - Cased And Uncased Vertical
Dedicated Horizontal - Light Commercial



Uncased Chilled Water “A” Coils

Performance Data - Chilled Water A-Coils 8K0, 8K1, 8K2, 8K5, 6K5								
COOLING PERFORMANCE DATA:								
CHILLED WATER COIL MODEL	Cooling Capacities @ Entering Water Temperature				CFM	GPM	PRESS. DROP WATER (FT-WTR)	PRESS. DROP AIR (WC)
	80°F / 67°F / 45°F		80°F / 67°F / 42°F					
	Total	Sensible	Total	Sensible				
CW018A8K0-41A 10 x 16, 4 Row, 4 Circuits, 15 FPI	16,015	11,426	17,812	12,232	400	2.0	2.28	0.08
	19,687	13,039	21,875	13,980		4.0	7.76	
	21,138	13,711	23,437	14,786		6.0	16.15	
	78,984	14,875	21,015	15,867	600	2.0	2.28	0.15
	24,804	17,454	27,656	18,644		4.0	7.76	
	27,500	18,446	30,703	19,834		6.0	16.15	
	21,015	18,193	23,125	18,973	800	2.0	2.28	0.24
	28,359	21,052	31,562	22,352		4.0	7.76	
	32,343	22,612	35,937	24,171		6.0	16.15	
	CW024A8K1-41A 12 x 16, 4 Row, 4 Circuits, 15 FPI	16,765	11,752	18,671	12,563	400	2.0	2.74
20,468		13,373	22,734	14,454	4.0		9.36	
21,796		14,049	24,218	15,130	6.0		19.19	
19,960		15,402	22,109	16,202	600	2.0	2.74	0.11
26,015		18,002	29,062	19,202		4.0	9.36	
28,906		19,202	32,133	20,602		6.0	19.19	
22,187		18,668	24,375	19,457	800	2.0	2.74	0.18
30,000		21,824	33,359	23,139		4.0	9.36	
34,062		23,401	38,125	25,242		6.0	19.19	
CW036A8K2-41A 14 x 16, 4 Row, 8 Circuits, 15 FPI		31,328	22,268	34,843	23,859	800	5.0	2.37
	34,687	23,859	38,750	25,715	7.0		4.31	
	36,875	24,920	40,996	26,510	9.0		6.73	
	34,609	25,858	38,437	27,495	1000	5.0	2.37	0.20
	38,906	27,822	43,281	29,459		7.0	4.31	
	41,875	29,131	46,562	31,095		9.0	6.73	
	37,187	29,095	41,328	31,035	1200	5.0	2.37	0.27
	42,343	31,423	47,187	33,362		7.0	4.31	
	45,820	32,586	51,171	34,914		9.0	6.73	
	CW048A8K5-15A 20 x 16, 4 Row, 8 Circuits, 15 FPI	49,557	34,512	55,270	37,288	1200	8.0	7.76
52,812		36,098	58,906	38,875	10.0		11.53	
56,093		37,288	62,500	40,462	13.0		18.36	
53,437		38,541	59,570	41,293	1400	8.0	7.76	0.19
57,382		40,376	63,984	43,129		10.0	11.53	
61,484		41,752	68,593	44,964		13.0	18.36	
56,718		42,105	63,203	44,704	1600	8.0	7.76	0.24
61,268		43,665	68,281	46,784		10.0	11.53	
65,937		45,744	73,750	49,383		13.0	18.36	
59,687		45,221	66,328	48,119	1800	8.0	7.76	0.29
64,687	47,540	72,787	50,438	10.0		11.53		
70,312	49,859	78,125	53,337	13.0		18.36		
62,187	48,539	69,140	51,093	2000	8.0	7.76	0.34	
67,656	51,093	75,312	53,649		10.0	11.53		
73,906	53,648	82,421	56,841		13.0	18.36		
CW060A6K5-15A 20 x 20-3/8, 4 Row, 8 Circuits, 15 FPI	52,949	36,090	58,984	38,897	1200	8.0	9.01	0.10
	56,250	37,694	62,656	40,501		10.0	13.38	
	59,296	39,298	66,171	42,105		13.0	21.29	
	57,187	40,437	63,750	43,225	1400	8.0	9.01	0.13
	61,406	41,831	68,437	45,085		10.0	13.38	
	65,390	43,690	72,968	47,408		13.0	21.29	
	60,937	43,793	67,968	46,959	1600	8.0	9.01	0.16
	65,703	45,904	73,281	49,597		10.0	13.38	
	70,937	48,542	78,984	51,708		13.0	21.29	
	64,218	47,754	71,484	50,702	1800	8.0	9.01	0.19
69,531	49,523	77,656	53,061	10.0		13.38		
75,468	52,471	84,218	56,008	13.0		21.29		
67,109	50,747	74,609	54,000	2000	8.0	9.01	0.23	
72,968	53,350	81,250	56,603		10.0	13.38		
79,609	55,952	88,750	59,856		13.0	21.29		

All Technical Specifications Subject to Change Without Notice
For more information contact Customer Service at...
(817) 624-0820 or your Summit Representative